

THE CABINS AT THE FARM SUNCADIA - PHASE 2 DIVISION 4

A PORTION OF SECTION 18, T. 20 N., R. 15 E., W.M.
KITTITAS COUNTY, WASHINGTON
ASSESSOR MAP NUMBER 20-15-18053-0053

AUDITOR'S REFERENCE

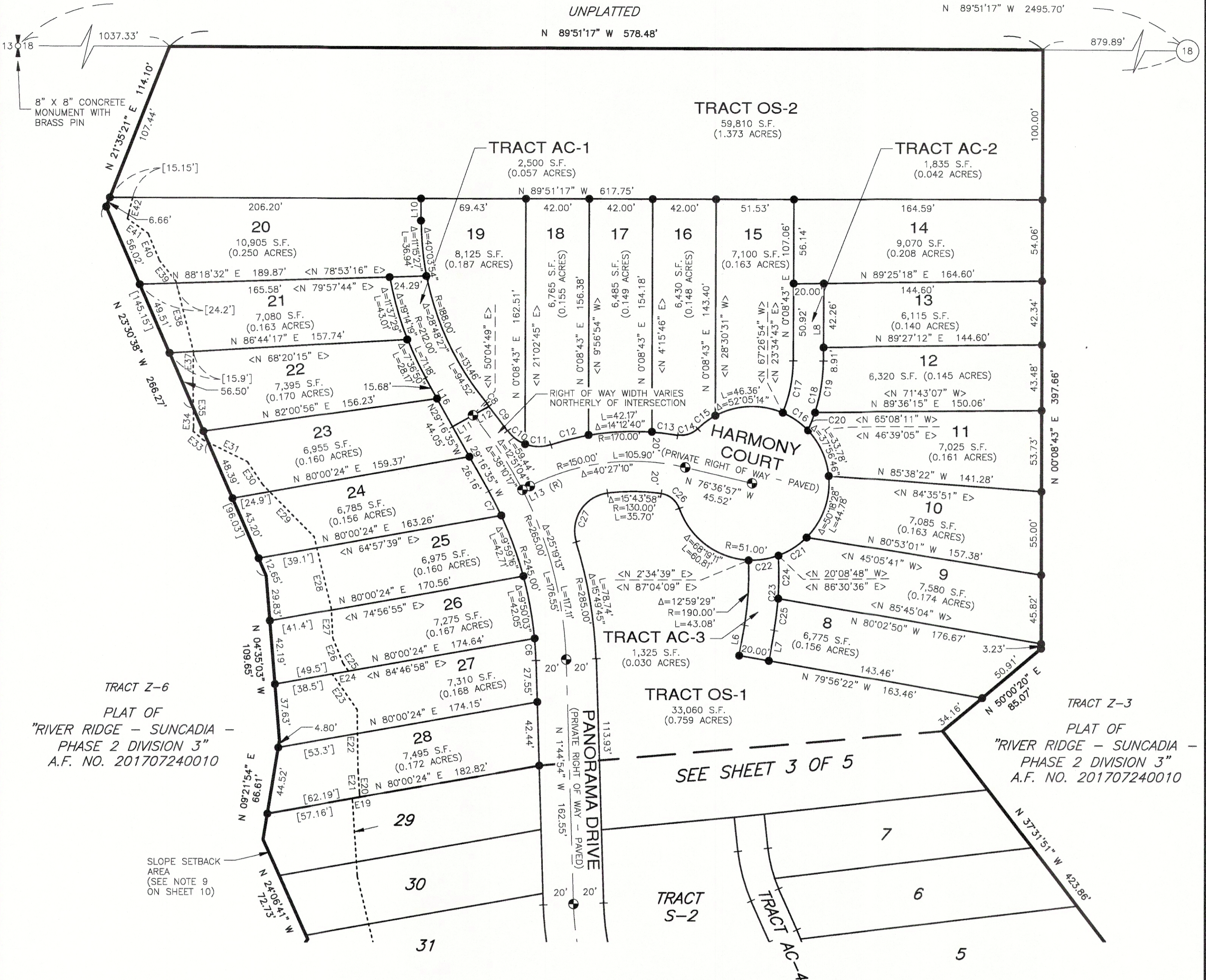
LP-20-00001
LPF-20-0000_

UNPLATTED

N 89°51'17" W 2495.70'

N 89°51'17" W 578.48'

879.89'



TRACT Z-6
PLAT OF
"RIVER RIDGE - SUNCADIA -
PHASE 2 DIVISION 3"
A.F. NO. 201707240010

TRACT Z-3
PLAT OF
"RIVER RIDGE - SUNCADIA -
PHASE 2 DIVISION 3"
A.F. NO. 201707240010

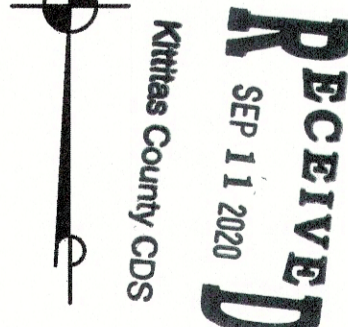
SEE SHEET 3 OF 5

SEE LINE AND CURVE CHARTS ON SHEET 5

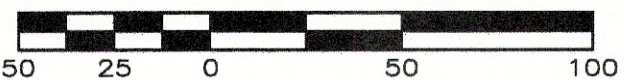
LEGEND

- SET SURFACE BRASS CAP STAMPED: "L.S. 44925"
- SET 5/8" REBAR WITH CAP STAMPED: "ESM LLC 44925 45782". IN THE EVENT THAT A NON-REMOVABLE OBSTACLE PREVENTS SETTING THE ACTUAL PROPERTY CORNER, A STAMPED 2" ALUMINUM CAP WILL BE SET ON THE PROPERTY LINE AS AN OFFSET TO THE ACTUAL CORNER WITH THE DISTANCE TO THE ACTUAL CORNER NOTED THEREON.
- Δ DELTA
- R RADIUS
- L ARC LENGTH
- (R) RADIAL BEARING
- <> RADIAL BEARING AT LOT CORNER
- << >> DISTANCE MONUMENT TO MONUMENT
- OS-1 OPEN SPACE TRACT - DESIGNATION NUMBER
- S-1 SERVICE TRACT - DESIGNATION NUMBER
- AC-1 ACCESS TRACT - DESIGNATION NUMBER
- [X.X'] DISTANCE TO SETBACK LINE

n



SCALE: 1" = 50'



RECORDING CERTIFICATE

FILED FOR RECORD AT THE REQUEST OF KITTITAS COUNTY BOARD OF COMMISSIONERS,
THIS _____ DAY OF _____ A.D., 2020, AT _____ MINUTES PAST
_____ O'CLOCK _____ M., AND RECORDED IN VOLUME _____ OF PLATS, ON
PAGES _____, RECORDS OF KITTITAS COUNTY, WASHINGTON.

BY : _____
DEPUTY COUNTY AUDITOR KITTITAS COUNTY AUDITOR

AUDITOR'S REFERENCE: _____

ESM CONSULTING ENGINEERS L.L.C.
33400 8th Ave. #205
Federal Way, WA 98003

www.esmcivil.com

Civil Engineering | Land Surveying | Land Planning
Public Works | Project Management | Landscape Architecture

DATE : 2020-08-28 JOB NO. 2111-001-019-0002
DRAWN BY: C.A.F./R.F.G. SHEET 4 OF 5

